

# OXIDE AND SULFIDE INTERFERENCE FILMS ON COPPER



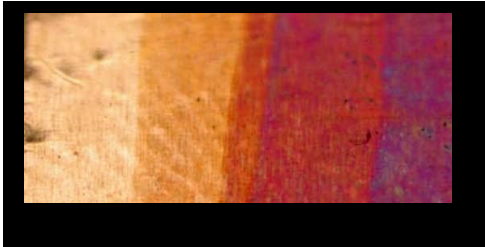
First Order

Second Order

Third Order

Fourth Order

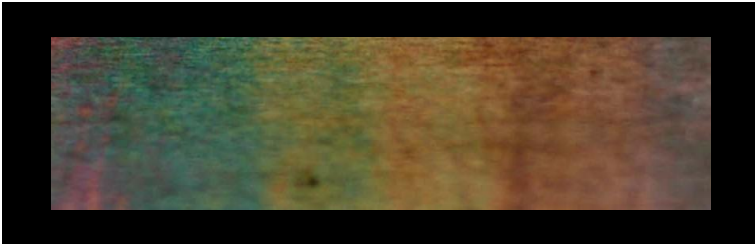
*These are the CuS and CuO interference films. They are divided into their different orders below. The orders go from very vibrant to muted smudges of color. It is important to recognize the saturation and hue so that you can relate any given piece to a specific order. You then will be able to determine the thickness of film. The number ranking of ASTM D130 roughly coincides with the interference order.*



Thickness: 0-54 nanometers



Thickness: 54-162 nanometers



Thickness: 162-269 nanometers



Thickness: 269-377 nanometers